

(19) World Intellectual Property Organization
International Bureau



(43) International Publication Date
1 September 2005 (01.09.2005)

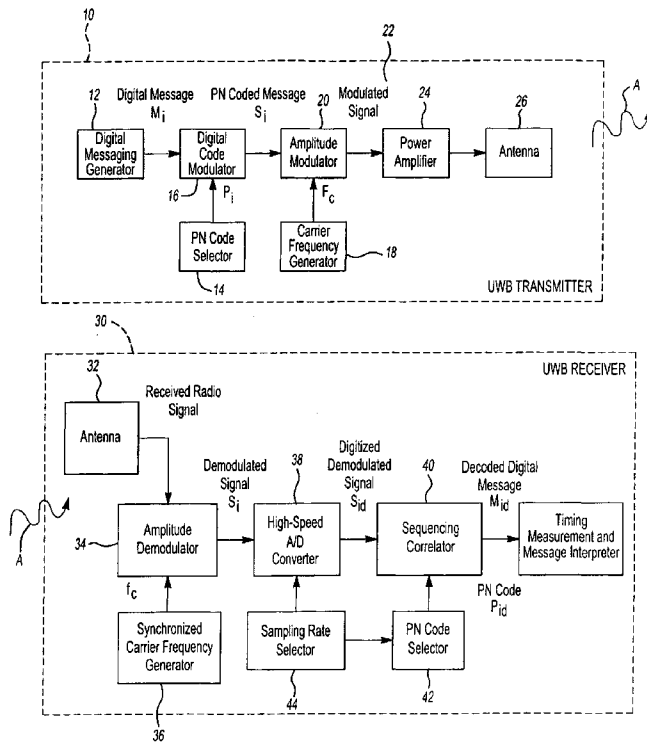
PCT

(10) International Publication Number
WO 2005/081012 A1

- (51) International Patent Classification⁷: **G01S 5/02**, 5/06, 5/08
- (21) International Application Number: PCT/US2005/004936
- (22) International Filing Date: 17 February 2005 (17.02.2005)
- (25) Filing Language: English
- (26) Publication Language: English
- (30) Priority Data:
 - 60/545,238 17 February 2004 (17.02.2004) US
 - 60/615,121 1 October 2004 (01.10.2004) US
 - 60/637,276 17 December 2004 (17.12.2004) US
- (71) Applicant (for all designated States except US): **JADI, INC.** [US/US]; 5800 Crooks Road, 2nd Floor, Troy, MI 48098 (US).
- (72) Inventors; and
- (75) Inventors/Applicants (for US only): **CHEOK, Ka, C.** [US/US]; 5800 Crooks Road, Troy, MI 48098 (US). **SMID, Edzko, G.** [US/US]; 3632 Charwood Drive, Rochester Hills, MI 48306 (US).
- (74) Agent: **VOCI, Christopher, J.**; Dobrusin & Thennisch PC, 29 W. Lawrence Street, Suite 210, Pontiac, MI 48342 (US).
- (81) Designated States (unless otherwise indicated, for every kind of national protection available): AE, AG, AL, AM, AT, AU, AZ, BA, BB, BG, BR, BW, BY, BZ, CA, CH, CN, CO, CR, CU, CZ, DE, DK, DM, DZ, EC, EE, EG, ES, FI, GB, GD, GE, GH, GM, HR, HU, ID, IL, IN, IS, JP, KE, KG, KP, KR, KZ, LC, LK, LR, LS, LT, LU, LV, MA, MD, MG, MK, MN, MW, MX, MZ, NA, NI, NO, NZ, OM, PG, PH, PL, PT, RO, RU, SC, SD, SE, SG, SK, SL, SY, TJ, TM, TN, TR, TT, TZ, UA, UG, US, UZ, VC, VN, YU, ZA, ZM, ZW.

[Continued on next page]

(54) Title: ULTRA WIDE BAND NAVIGATION SYSTEM WITH MOBILE BASE STATIONS



(57) Abstract: The present invention relates to a method of determining the location of a target. The method includes initializing a set of base stations to determine their location relative to each other. At the target, the time of arrival of at least one signal from each of the plurality of base stations is measured. From this, the location of the target relative to the plurality of base stations may be directly calculated using a closed solution. In one embodiment, a time of arrival technique is used and in another embodiment a time difference of arrival technique is used. Preferably an ultra-wide band frequency is utilized.

WO 2005/081012 A1



(84) Designated States (unless otherwise indicated, for every kind of regional protection available): ARIPO (BW, GH, GM, KE, LS, MW, MZ, NA, SD, SL, SZ, TZ, UG, ZM, ZW), Eurasian (AM, AZ, BY, KG, KZ, MD, RU, TJ, TM), European (AT, BE, BG, CH, CY, CZ, DE, DK, EE, ES, FI, FR, GB, GR, HU, IE, IS, IT, LT, LU, MC, NL, PL, PT, RO, SE, SI, SK, TR), OAPI (BF, BJ, CF, CG, CI, CM, GA, GN, GQ, GW, ML, MR, NE, SN, TD, TG).

For two-letter codes and other abbreviations, refer to the "Guidance Notes on Codes and Abbreviations" appearing at the beginning of each regular issue of the PCT Gazette.

Published:

— with international search report

ULTRA WIDE BAND NAVIGATION SYSTEM WITH MOBILE BASE STATIONS

CLAIM OF PRIORITY

[0001] The present application claims the benefit of provisional application Serial No. 60/545,238, filed February 17, 2004, Serial No. 60/615,121, filed October 1, 2004, and Serial No. 60/637,276, filed December 17, 2004, all of which are hereby incorporated by reference.

FIELD OF THE INVENTION

[0002] The present invention relates to the use of an ad hoc network during navigation and/or location. More particularly, the invention relates a system with three or more base stations, some of which are preferably mobile, that use explicit closed-form triangulation calculation to determine the location of a target.

BACKGROUND OF THE INVENTION

[0003] The Global Positioning System (GPS) is based on the fixed location base stations and the measurement of time-of-flight of accurately synchronized station signature transmissions. The base stations for the GPS are geo-stationary satellites and require atomic clocks for synchronization.

[0004] GPS has several draw backs including relatively weak signals that do not penetrate heavy ground cover and/or man made structures. Furthermore, the weak signals require a sensitive receiver. GPS also utilizes a single or narrow band of frequencies that are relatively easy to block or otherwise jam. The accuracy of the GPS system relies heavily on the use of atomic clocks, which are expensive to make and operate.

[0005] In addition, GPS utilizes a relatively slow update rate; on the order of once per second, which makes it ill suited for use in autonomous navigation of a vehicle. For example, a vehicle traveling at 10 kph would move about 2.75 m in a second. For an autonomous vehicle, significant changes in terrain may occur in this distance, making an update rate of once per second much too slow.

[0006] Known triangulation methods are also numerical in nature, meaning that no direct solution is available to find the location of the target. Rather, these open-form solutions provide only a initial guess and iterative numerical solution to estimate the location of the target. The resolution and accuracy of the location determination suffers accordingly. Further, using an open form solution in three dimensions is very difficult. There has not previously been a method to directly calculate the location of the target. Such a direct calculation would necessary increase the resolution and accuracy of the location determination.

[0007] The present invention overcomes one or more of these problems.

SUMMARY OF THE INVENTION

[0008] The present invention relates to methods of determining the location of a target unit (TU) in ad hoc, and preferably mobile, manner. The method includes initializing a network of at least three base stations (BS) to determine their relative location to each other in a coordinate system. The target then measures the time of difference arrival of at least one signal from each of three base stations. From the time difference of arrival of signals from the base stations, the location of the target on the coordinate system can be calculated directly. The invention further relates to components and system that embody the disclosed methods.

[0009] **Overview.** The ad hoc network discussed herein is a wireless radio network for determining a target location with high positioning accuracy and fast update rate. Such a network includes multiple base stations and at least one target unit, linked together with via high frequency ultra-wide bandwidth (UWB) wireless ranging and communication (RAC) transceivers and location schemes. The UWB RAC scheme ensures the desired accuracy in distance measurements and station identification. The location schemes employ fast direct closed-form solution for self-organizing local and global geographic (e.g. GPS) coordinate systems, and determining position of base stations and targets within the desired coordinate system.

[0010] **Gigahertz UWB.** The ad hoc network utilizes gigahertz UWB radio transceivers to provide ranging and communication information among base stations and targets.

[0011] **UWB Methods.** The UWB ranging and communication scheme may employ one or more of the following techniques: Time division multiple access (TDMA), frequency division multiple access (FDMA) or code division multiple access (CDMA). A direct sequence (DS)-CDMA scheme is a preferred UWB scheme for providing ranging resolution and identification of base stations and targets.

[0012] **Chiprate & Resolution.** The UWB RAC scheme preferably operates at giga-bits/sec (Gbits/s) chip rate and is capable of yielding centimeter resolution in range measurements at a rate of several thousand updates per second. For example, a range resolution of approximately 30 cm is achievable with a 1 Gbits/s chiprate; 3 cm resolution with 10 Gbits/s chiprate.

[0013] **Over-sampling & Resolution.** The invention also includes a method of employing high speed digital or analog over-sampling and signal processing to increase the resolution in the range measurements in the DS-CDMA scheme. For example, a 1 Gbits/s signal sampled at 10 Giga-samples per second (GS/s) and correlated at 10 GHz rate yields a 3 cm range resolution.

[0014] **Radio Penetration.** The high frequency UWB spectrum also penetrates through objects including buildings, ground cover, weather elements, etc., more readily than other narrower bandwidth signals such as the GPS. This makes UWB advantageous for non-line-of-sights, and less susceptible to multipath and canopy problems.

[0015] **Distributed Power Spread Spectrum.** The bandwidth of UWB signals may range from approx 100 MHz to 10 GHz or more, which means that the power of the signals may be distributed almost evenly over the wide spread spectrum. The power spectral density of UWB signals has similar appearance to that of a random noise spectrum, and hence, often makes the UWB signals undetectable or ambiguous. UWB signals thus have desirable low probability interference and low probability detection characteristics.

[0016] **UWB versus Narrowband Disturbance.** The wide spread spectrum also makes it difficult for signals with lesser bandwidth to corrupt the UWB signals. This would be a desirable characteristics in the case of on deliberate jamming by a narrowband broadcast or disturbances.

[0017] Non-ambiguous Station Identification. The ad hoc network utilizes base stations equipped with UWB transceivers. The base stations communicate with each other and uniquely identify themselves. The identity is encoded with transmitted UWB signals. A base station correlates a received signal with the base station that sent it, and thus alleviating any ambiguity about the identity of transmission sources.

[0018] Self-Organization of Base Station Local & Global Coordinates. The base station locations in the ad hoc network may be fixed or mobile. The network will automatically establish the coordinates of the BS with respect to a local coordinate system. The network may be set up with BSs at desired locations in a matter of minutes. The network may also determine the global geographical coordinates by combining the local coordinates with GPS coordinates of base stations. Ad hoc network therefore provides both local & global coordinate frame references.

[0019] Target Unit Coordinates. The location of a target unit will be referenced to the local and/or global coordinate frames established for the base stations.

[0020] Time-of-Arrival (TOA). In a time-of-arrival (TOA) method, a target unit broadcasts a UWB transmission to the base stations. The TU then waits and receives returning UWB replies from each of the base stations. It clocks the time-of-arrivals of returning UWB replies and the clocked times are converted to the distances from the target to each of the base stations. A closed-form solution to the triangulation problem is used to ensure fast calculation of the location of the TU.

[0021] Time-Difference-of-Arrival (TDOA). In a time-difference-of-arrival (TDOA) method, the target unit only receives UWB transmissions from the base stations; it does not transmit. A pre-arranged master base station broadcasts an initial UWB transmission to designated slave base stations & the target units. The slave BS then take turns to also transmit their own UWB signals to the TUs. The target clocks the time of arrivals of the transmission from the master and slave base stations. The known differences in the measured times of arrivals becomes the key inputs to the TDOA triangulation problem. This invention embodies a novel

explicitly expressed closed-form TDOA method that ensures fast calculation of the location of the target.

[0022] Advantageous. The main advantages of the Ad hoc network are 1) the ad hoc & mobile manner in which the base stations may be rapidly set up, 2) the high precision in determining the location of a target, 3) the fast update rate of the location calculations, 4) the high penetration property desirable for non line-of-sight applications, 5) the higher tolerance to radio disturbances and resistant to jamming.

BRIEF DESCRIPTION OF THE DRAWINGS

[0023] In the drawings:

[0024] Fig. 1 illustrates the functional component of a UWB RAC transmission and receiving scheme;

[0025] Fig. 2 illustrates an example of direct sequence CDMA with UWB signals;

[0026] Fig. 3 illustrates a self-organizing scheme for establishing local & global coordinate system utilizing four base stations;

[0027] Fig. 4 illustrates a TDOA UWB RAC scheme for locating the target utilizing four base stations

DETAILED DESCRIPTION

[0028] The method of the present invention includes initializing a network of at least three base stations to determine their relative location to each other in a coordinate system; measuring, at the target, the time of arrival of at least one signal from each of three base stations, and then calculating the location of the target on the coordinate system can be calculated directly.

[0029] The initializing step utilizes at least three base stations and preferably at least four base stations. The base stations are transceivers that are capable of both receiving and transmitting signals. One of the base stations may be designated as the master station, as

necessary. The master designation is arbitrary and may be shuttled amongst the base stations. In a preferred embodiment, the master designation resides on a single base station until that base station becomes deactivated (e.g. the base station is powered down, loses communication with or travels out of range of the other base stations). The remaining base stations may be designated slave stations. Because the master designation is transferable among the slave stations, preferably each slave station is capable of acting as the master station.

[0030] The base stations, comprised of the master station and slave stations, may be stationary (whether permanently or temporarily) or mobile. Mobile base stations may be mounted to transportation vehicles such as automobiles, trains, boats, submarines, airplanes, helicopters, or the like. Base stations may also be mounted to non-transportation vehicles. Non-transportation vehicles include unmanned motorized vehicles. Non-transportation vehicles will typically be autonomous in that they are remotely controlled through wireline or wireless communication (e.g. an aerial drone or a mobile robot). Transportation vehicles used to house base stations may also be autonomous. Any suitable protocol may be used to communicate with an autonomous vehicle.

[0031] Mobile base stations may also be designed to be carried by an un-motorized vehicle, a pack animal or a human. As such, the base stations may be sized and shaped to be mounted to or contained within the desired transport, whether it is mounted to an automobile, carried by an aerial drone, carried in a backpack or built into a handheld unit. Preferably, the base stations are mounted to transportation vehicles. In a more preferred embodiment, at least one of the base stations is mounted to an autonomous vehicle.

[0032] The base stations may be stationary or in motion for any or all of the duration of the methods discussed below. Permanently fixed base stations may be suitable for certain applications; particularly where GPS is not suitable (e.g. within cities with tall building or within thick vegetation).

[0033] Due to the UWB frequency spectrum and thus its high penetration, placement of the base stations may not be critical. That is, the base stations and target may be non line-of-sight. Preferably, they should be placed such that the target remains within the volume circumscribed

by the ranges of the base stations. While the distance between the base stations and the target is not critical, preferably the longest distance between a base station is less than about 100 KM, less than about 75 km, less than about 50 km, less than about 25 km, less than about 10 km, less than about 5 km, less than about 1 km or less than about 500m. The signal power may suitably be selected to facilitate operation of the system any of these distances.

[0034] Each base station is capable of transmitting and receiving gigahertz high frequency UWB signals to communicate with other base stations and the target. The UWB signal is selected to reduce the interference from vegetative ground cover and from buildings, while also providing sufficient resolution in timing arrivals of signals. The UWB reduces problems associated with multi-path travel of signal because it tends to penetrate objects as opposed to being reflected. The high degree of penetration also means that the system incorporating UWB may be used successfully in non-line-of-sight applications, e.g. in urban settings or within a forest canopy. Furthermore, the UWB signals allow power of the signals to be spread over a gigahertz or more of frequency spectrum, thus making the signals very hard to detect, decode or jam. UWB signals may operate at the threshold of noise levels, meaning the signal's characteristics would look like those of sporadic noise to uninformed viewers. In broad terms, preferred carrier frequency for the UWB may be range from about 0.5 GHz to about 20 GHz, and the UWB may span between about zero and about 10 GHz.

[0035] To improve the accuracy of locations in the case where the target and the base stations are approximately in the same plane, at least one base station may be placed in a plane different than the remaining base stations. Further, additional base stations may be utilized to increase the accuracy of location determinations of the base stations and/or the target.

[0036] The initializing step uses either or both TOA or TDOA schemes to set up the network and determine the location the base stations, as discussed below.

[0037] Suitable targets include receivers as well as transceivers. A target acting in receiver-only mode are preferred over those acting in transceiver mode because a receiver does not broadcast information that may be used to reveal its location and is thus more secure. Because the base stations are also transceivers, a target that includes a transceiver may also act as a base

station. Targets are primarily mobile, although they may stationary for a given period of time. Permanently fixed targets are not preferred, but may be suitable given the right circumstances, such as during research and development activities.

[0038] The targets may be housed in similar types of mobile and fixed units as the base stations. Besides transportation vehicles, preferred targets may be included with non-transportation vehicles, both autonomous and otherwise. Exemplary non-transportation vehicles include lawnmowers, land mine sweepers and aerial drones. Preferably, the targets are mounted to autonomous non-transportation vehicles that may be used for surveillance or security applications. Targets may also suitably be constructed into backpack devices or handheld units. Of course multiple targets may be located using a single group of base stations.

[0039] An example of a preferred target will be included on a land mine sweeper that includes devices to provide self-propelled movement to the sweeper (e.g. a motor and wheels or tracks), mine detection sensors (e.g. metal detector or imaging systems), mine deactivation capabilities, mine location designation capability (e.g. flag, paint, etc.), on-board computer for data storage, computation and communication, combinations thereof, or the like.

[0040] The components needed to implement the methods discussed herein may be incorporated into existing vehicles as an aftermarket add-on or incorporated by an original equipment manufacture or supplier into a vehicle during the build up of the vehicle.

[0041] Various information coding schemes may be used in the transmitted UWB signals to carry the desired information. A first suitable coding scheme is the time-division multiple access (TDMA) technique where a timing scheme in a UWB pulse packet represents the coded signals transmission. A second suitable coding scheme is the frequency-division multiple access (FDMA) technique where a select set of multiple bands of frequencies represents the coded transmission channel. A third suitable coding scheme is the code-division multiple access (CDMA) techniques where a pseudorandom number (PN) modulates and codes a signal to be transmitted. Typical TDMA, FDMA and CDMA coded signals have wide spectrums in hundreds of megahertz (MHz). UWB TDMA, FDMA and CDMA coded signals would have spectrums spread between about zero and about 10 GHz.

[0042] In addition to transmitting and receiving messages, a coded UWB signal can be timed to provide a measurement of the range between base stations and targets. The premise is based on the advent of extremely high speed electronics. For example, a 1 Gbits/s clock tick would translate to a flight of about 0.2997925 meter by the radio wave, and a 10 Gbits/s would clock with a resolution of about 0.03 m. The arrival times of UWB signals may be clocked using a correlator or matched filter techniques to measure the ranges between base stations and targets with suitable resolutions.

[0043] Although TDMA, FDMA and CDMA schemes may be timed for ranging purposes, a preferred embodiment is the UWB signal that utilize a direct sequence code division multiple access (DS-CDMA) communications technique to transmit information. In particular, DS-CDMA utilizes PN codes to identify each transmitter within a system (e.g. the base stations and/or the target). The PN code allows the receivers and transceivers within a system to simultaneously identify and decode the signals from multiple transmitters in the system. Each receiver/ transceiver in the system uses a PN correlator to match PN codes to particular transmitters. Preferably, each receiver/transceiver has one PN correlator for each transmitter in the system.

[0044] This invention provides an additional preferred embodiment for improving resolution of the DS-CDMA ranging scheme by introducing high speed over-sampling of acquiring of coded signals. The PN correlators are designed to operate at a clock rate that is multiple times faster than the chiprate of the UWB signal. When a coded DS-CDMA signal is sampled at a rate faster than the chip rate of the PN correlator, a higher ranging resolution can be achieved. For example, if the PN correlator chip rate is about 1 Gbits/s, and the coded signal is digitally acquired at the about 1 Gbits/s, then the possible range resolution is about 0.3 meters. If the same signal is sampled and acquired at about 10 giga-samples/sec (GS/s), for example, then the range resolution can be improved to about 0.03 meters or 3 cm. This embodiment is described in detail a later section.

[0045] Figure 1 illustrates a preferred embodiment of the functionality of the DS-CDMA transmitter and receivers utilized in the present invention. The transmitter 10 includes a digital

message generator 12 which provides the message to be transmitted, M_i . A PN code selector 14 generates a PN code, P_i , that uniquely identifies the transmitter. A digital code modulator 16 modulates the message, M_i , by the PN code, P_i , to obtain a PN coded message, S_i . An RF carrier frequency, f_c , produced by carrier frequency generator 18 is combined with the message, S_i , at an amplitude modulator 20 to produce a modulated signal 22. The modulated signal is passed to a power amplifier 24 and then to an antenna 26 to be broadcast, as shown by arrow A.

[0046] The receiver 30 likewise includes an antenna 32 to receive the broadcast signal, as shown by arrow A. The receiver antenna passes the received signal to an amplitude demodulator 34. The demodulator uses a synchronized carrier frequency, f_c , from a synchronized carrier frequency generator 36 to demodulate and retrieve the PN coded message, S_i , from the received signal. Optionally, a high speed A/D converter 38 may be used to obtain a digitized demodulated signal, S_{id} . A sequence correlator 40 will be used to match the received digitized demodulated signal, S_{id} , to the PN code, P_{id} , stored in transmitter's own PN code selector 42. A sampling rate selector 44 may be used to in conjunction with A/D converter and/or the PN code selector. Matching the PN codes marks the arrival of the received signal and the time of correlation is marked. The time of arrival may then be stored for later use or passed directly to a message interpreter. In either case, the time of arrival may be used in the calculation of distances or locations, as discussed below.

[0047] UWB RANGING & COMMUNICATION

[0048] **Pseudo-random Number (PN) Code.** The PN code, P_i , which could be tens to hundreds of bits long, is the code that identifies with a particular base station. To maximize distinctions in correlation and minimize cross-talk interference, Gold, Golay, Barker or Walsh codes may be used for the PN codes.

[0049] **Digital message.** The digital message M_i may carry pre-amble, identification, message codes or any other desired information. In practice, M_i could be tens to hundreds of bits long.

[0050] **Transmitter scheme.** As an example, consider a digital message $M_i = 101 (+-+)$ and a PN code $P_i = 1110010 (+++--+)$, as shown in Fig. 2. Note that unipolar binary of "1" and

“0” is converted to bipolar equivalence of “+” and “-”. In the bipolar representation, a “0” would mean that there is no signal. The digital message M_i modulates the amplitude of the PN code P_i . The PN coded message may be expressed as a Kronecker product of the digital message and the PN code; i.e., PN coded message $S_i = \text{kroncker}(M_i, P_i) = 1110010\ 0001101\ 1110010\ (++++--+- - --++-+ +++--+-)$. The S_i then amplitude modulates a carrier signal for transmission.

[0051] Example rate. As an example of the above scheme, consider a digital message M_i with a baud rate of 70 Mbits/s modulating a PN code P_i with a chiprate of 350 Mbits/s. The resultant PN coded signal S_i with a chiprate of 350 Mbits/s is then upconverted to an amplitude modulated signal with about a 2.5 GHz carrier frequency for wireless transmission.

[0052] Spread spectrum. The narrow frequency spectrum of the digital message M_i is spread into an ultra-wide bandwidth spectrum of the PN coded message S_i . The UWB spectrum is shifted and centered at the carrier frequency f_c to achieve an ultra-wide bandwidth spectrum for the modulated signal.

[0053] Receiver scheme. The receiver receives the transmitted signal, and demodulates the received signal into an analog demodulated signal S_{iD} . A threshold or edge detection synch technique may be used to trigger conversion of the analog demodulated signal into a digital demodulated signal $S_{iD}(kT)$, where $t = kT$, T being the sampling interval and k is the time index. The sampled digital signal $S_{iD}(kT)$ may then be correlated with the PN code P_i to produce a decoded message M_{iD} .

[0054] Direct sequence correlation. If the sampling rate is chosen to be the same as the PN chiprate of 350 Mbits/s, i.e., the sampling rate of 350 MSamples/s, then a direct sequence correlation between the sampled decoded signal $S_{iD}(kT)$ and the PN code P_i may be performed. The shift registers, denoted by D^{-1} in the figure, clocked at T , and thus hold the record $S_{iD}(kT-T)$, $S_{iD}(kT-2T)$, ..., $S_{iD}(kT-6T)$. The sampled data $\{S_{iD}(kT-jT), j = 0, 1, 2, \dots, 6\}$ is multiplied by the reverse bits of PN code, i.e., $\{P_i(m), m = 7, 6, 5, \dots, 1\}$. The sum of the product is the output of the filter. The matched filter produces a positive or negative peak value when there is a match between the shifted coded data and PN code.

[0055] Direct sequence correlation resolution. The time resolution T translates to a range resolution of CT , C being the speed of light. In the case, the sampling interval $T = 1/350\text{M}$ sec, and so the resolution in clocking the time of arrival is $T = 2.8571$ ns which translates to a ranging resolution of about 0.8566 meter.

[0056] Over-sampling sequence correlation. Alternatively, a higher speed digital threshold sampler may be used; for example, consider a digital sampler with 1.75 GS/s (giga-samples/sec) which is chosen to be five times the chiprate of 350Mbits/s. The digital samples are then correlated with the PN code constructed at a new chiprate of 1.75 Gbits/s. The oversampled sequence $S_{iD}(kT)$, $S_{iD}(kT-T/n_0)$, $S_{iD}(kT-2T/n_0)$, ..., $S_{iD}(kT-(n_s-1)T/n_0)$, $S_{iD}(kT-T)$, $S_{iD}(kT-(n_s+1)T/n_0)$, etc is correlated with a stretched PN code $P_{i,7}$, 0, 0... , 0, $P_{i,6}$, 0, etc, at T/n_0 second interval, where n_s is the number of over-sampling. In this case, the matched outputs may occur at T/n_0 sampling time interval. Therefore, the new over-sampling configuration provides n_s times more resolution than the previous direct configuration.

[0057] Over-sampling sequence correlation resolution. The time resolution T/n_0 translates to a range resolution of CT/n_0 , C being the speed of light. Therefore using the higher speed sampler and correlator in this way produces higher resolution in timing arrivals of signals; in this case the oversampling resolution is n_s finer than that of the direct sampling. For example, when $n_0 = 5$ is used, the shift registers are clocked at $T/5$ second. The matched filter therefore produces an output every $T/5$ second. In the oversampling case, the sampling interval $T = 1/1.75\text{G}$ sec, and so the resolution in clocking the time of arrival is $T = 0.5714$ ns, translating to a ranging resolution of about 0.1713 meter, which is five times ($1.75\text{G}/350\text{M}$) finer than 0.8566 meter, the case of direct sampling.

[0058] Over-sampling analog sequence correlation. Yet another alternative is the analog approach where the analog demodulated signal is sampled using a high-speed analog-to-digital converter (ADC); for example, an 8-bit ADC with a throughput of 1.75 GS/s. The sampled signal may then be correlated with the PN code constructed at a chiprate of 1.75 Gbits/s. The correlation decodes the sent message, yields higher resolution timing for arrivals of the signal, and also indicates the strength of received signal.

[0059] Time-of-Arrival & Time-Difference-of-Arrival Methods. Closed-form solutions for TOA and TDOA techniques are presented.. Both techniques may be used for initializing the network of base stations to determine their relative locations of the base stations and for locating the target. Preferably a combination of the techniques is utilized in the overall system, with TOA utilized to initialize the base stations and TDOA to locate the target.

[0060] A TOA/TDOA Combination. In the embodiment described below, the relative locations of the base stations are determined through a TOA technique. These relative locations may optionally be combined with other information (e.g. GPS data) to provide global geographic locations. An explicitly expressed closed-form TDOA technique is then employed to calculate the location of the target.

[0061] Relative Locations of Base Stations

[0062] Designation of Base Stations. A preferred embodiment of the network uses four base stations designated as BS₁, BS₂, BS₃ & BS₄, with BS₁ arbitrarily selected as the master station. Additional base stations, BS₅, ... , BS_N, may be readily appended.

[0063] TOA Range Measurement. To begin initializing the network, BS₁ will broadcast a UWB signal transmission to BS₂, BS₃ & BS₄. Upon receiving the signal, each base station waits for a predetermined time delay and replies with its own UWB signal transmission that identifies with the base station. BS₁ will clock the time-of-arrivals for the each of the replies from BS₂, BS₃ & BS₄ and record the total time-of-flight T_{121} , T_{131} & T_{141} . As an example, the total time-of-flight T_{121} comprises: time-of-flight T_{12} for the first signal transmission to go from BS₁ to BS₂; the delay T_{D2} at BS₂; and T_{21} ($= T_{12}$), the time-of-flight for the reply transmission to go from BS₂ to BS₁. That is, $T_{121} = T_{12} + T_{D2} + T_{21}$. Therefore the time of flight between BS₁ & BS₂ is

$$T_{12} = \frac{(T_{121} - T_{D2})}{2} \text{ and the distance between them is } \ell_{12} = C T_{12}, \text{ where } C = 2.99792458 \times 10^8 \text{ m/s is}$$

the speed of radio wave. The value of C used in this calculation may be changed to represent the change in the speed of light based on the ambient temperature, humidity and altitude.

[0064] The distances ℓ_{13} & ℓ_{14} between BS₁ & BS₃ and BS₁ & BS₄ can therefore similarly be determined using the TOA technique. Next, BS₂ will similarly broadcast its UWB signal

transmission and clock the replies from BS₃ & BS₄. The distances from BS₂ to BS₃ and BS₄ are obtained as ℓ_{23} & ℓ_{24} , Lastly, BS₃ will similarly broadcast its UWB signal transmission, clock the reply from BS₄, and calculate the distance ℓ_{34} . This set of steps provides all the necessary information for determining the relative locations of the base stations.

[0065] In general, the TOA timing is given by

$$T_{ij} = \frac{(T_{iji} - T_{Dj})}{2} \tag{1}$$

where time T_{ij} for the radio transmission to go from BS_i to BS_j, T_{iji} is the total time-of-round trip flight and T_{Dj} is the delay time at BS_j. The TOA range measurement is calculated from

$$\ell_{ij} = C T_{ij} \tag{2}$$

C being the speed of radio wave propagation.

[0066] **Local Coordinate Frame.** The information obtained through the signal transmissions above may be utilized to determine location of the base stations on a local coordinate system. For convenience, a local Cartesian coordinate system is utilized, although

other coordinate system may be appropriate: Let $\begin{bmatrix} x_1 \\ y_1 \\ z_1 \end{bmatrix}$, $\begin{bmatrix} x_2 \\ y_2 \\ z_2 \end{bmatrix}$, $\begin{bmatrix} x_3 \\ y_3 \\ z_3 \end{bmatrix}$ & $\begin{bmatrix} x_4 \\ y_4 \\ z_4 \end{bmatrix}$ be the coordinates

of the location of BS₁, BS₂, BS₃ & BS₄. The location of BS₁ is assigned to be the origin; i.e., $x_1 = 0, y_1 = 0$ & $z_1 = 0$. BS₂ is assigned to be located on the x-axis of the coordinate system; i.e., $x_2 = \ell_{12}, y_2 = 0$ & $z_2 = 0$. Next, BS₃ is assigned to be located on the xy-plane of the coordinate system; i.e., $z_3 = 0$. This completes the definition of the local coordinate frame.

[0067] **Coordinates of BS's.** The location coordinates x_3, y_3, x_4, y_4 & z_4 of BS₃ and BS₄, remains to be determined. It may be shown that the distances and the coordinates are related by

$$\begin{aligned}
\ell_{13}^2 &= x_3^2 + y_3^2 \\
\ell_{14}^2 &= x_4^2 + y_4^2 + z_4^2 \\
\ell_{23}^2 &= (\ell_{12} - x_3)^2 + y_3^2 \\
\ell_{24}^2 &= (\ell_{12} - x_4)^2 + y_4^2 + z_4^2 \\
\ell_{34}^2 &= (x_3 - x_4)^2 + (y_3 - y_4)^2 + z_4^2
\end{aligned} \tag{3}$$

From this relationship, the desired coordinates is thus given by

$$\begin{aligned}
x_3 &= \frac{\ell_{12}^2 + \ell_{13}^2 - \ell_{23}^2}{2\ell_{12}} \\
y_3 &= (\ell_{13}^2 - x_3^2)^{1/2} \\
x_4 &= \frac{\ell_{12}^2 + \ell_{14}^2 - \ell_{24}^2}{2\ell_{12}} \\
y_4 &= \frac{(x_3 - x_4)^2 + y_3^2 + \ell_{14}^2 - x_4^2}{2y_3} \\
z_4 &= (\ell_{34}^2 - (x_3 - x_4)^2 - (y_3 - y_4)^2)^{1/2}
\end{aligned} \tag{4}$$

This completes the determination of the local coordinates for BS_{*i*}, *i* = 1, 2, 3 & 4.

[0068] Coordinates of additional BS's. The result is readily extended to additional BS_{*i*}, *i* = 5, 6, ..., *N*, where *N* is the total number of base stations. The distances ℓ_{1i} , ℓ_{2i} & ℓ_{3i} from BS_{*i*} to BS₁, BS₂ & BS₃ would be calculated on the TOA measurement technique already described above. By induction from equation (4), the coordinates of BS_{*i*} would then be given by

$$\begin{aligned}
x_i &= \frac{\ell_{12}^2 + \ell_{1i}^2 - \ell_{2i}^2}{2\ell_{12}} \\
y_i &= \frac{(x_3 - x_i)^2 + y_3^2 + \ell_{1i}^2 - x_i^2}{2y_3} \\
z_i &= (\ell_{3i}^2 - (x_3 - x_i)^2 - (y_3 - y_i)^2)^{1/2}
\end{aligned} \quad i = 5, 6, \dots, N \tag{5}$$

[0069] Closed-form TOA method for local BS location. The formulas (1) & (2) are TOA range measurements from the signal transmission, which are then used in (4) & (5) to compute the coordinates of the base stations.

Kinematics. Global geographical locations of the base stations are related to the relative locations by a translation and rotation kinematic relationship as follows:

$$\begin{bmatrix} {}^G x_i \\ {}^G y_i \\ {}^G z_i \end{bmatrix} = \begin{bmatrix} d_x \\ d_y \\ d_z \end{bmatrix} + \begin{bmatrix} e_{11} & e_{12} & e_{13} \\ e_{21} & e_{22} & e_{23} \\ e_{31} & e_{32} & e_{33} \end{bmatrix} \begin{bmatrix} x_i \\ y_i \\ z_i \end{bmatrix} \quad (6) \text{ where } {}^G x_i, {}^G y_i \text{ \& } {}^G z_i$$

denote geographical coordinates, d_x , d_y & d_z are the translation parameters, e_{ij} , $i=1,2,3$, $j=1,2,3$ represent the rotation transformation parameters and x_i , y_i & z_i are the relative coordinates determined earlier. The geographical coordinates ${}^G x_i$, ${}^G y_i$ & ${}^G z_i$ correspond to what is generally known as longitude, latitude and height of a location, whereas x_i , y_i & z_i are the local relative coordinates obtained using the methods of UWB RAC & TOA measurements.

[0070] GPS data. The translation and rotation parameters may preferably be determined by placing GPS receivers on three of the base stations, although only a single GPS receiver is required. For explanation purposes, suppose that GPS antennas are installed as close as possible to the transceivers of BS₁, BS₂ & BS₃. The global geographical coordinates of these base stations may be accurately determined by using precision GPS, or by calculating statistical mean of less precise GPS data when they are stationary. They would be denoted by

$$\begin{bmatrix} {}^G x_1 \\ {}^G y_1 \\ {}^G z_1 \end{bmatrix}, \begin{bmatrix} {}^G x_2 \\ {}^G y_2 \\ {}^G z_2 \end{bmatrix} \text{ \& } \begin{bmatrix} {}^G x_3 \\ {}^G y_3 \\ {}^G z_3 \end{bmatrix}.$$

[0071] Translation parameters. It is readily seen that the translation parameters simply equate to the GPS coordinates of BS₁, which is the origin of the local coordinate frame; i.e.,

$$\begin{bmatrix} d_x \\ d_y \\ d_z \end{bmatrix} = \begin{bmatrix} {}^G x_1 \\ {}^G y_1 \\ {}^G z_1 \end{bmatrix} \quad (7)$$

[0072] Rotational parameters. The rotation transformation parameters must satisfy

$$\begin{bmatrix} {}^G x_2 \\ {}^G y_2 \\ {}^G z_2 \end{bmatrix} = \begin{bmatrix} d_x \\ d_y \\ d_z \end{bmatrix} + \begin{bmatrix} e_{11} & e_{12} & e_{13} \\ e_{21} & e_{22} & e_{23} \\ e_{31} & e_{32} & e_{33} \end{bmatrix} \begin{bmatrix} \ell_{12} \\ 0 \\ 0 \end{bmatrix} \quad (8)$$

$$\begin{bmatrix} {}^G x_3 \\ {}^G y_3 \\ {}^G z_3 \end{bmatrix} = \begin{bmatrix} d_x \\ d_y \\ d_z \end{bmatrix} + \begin{bmatrix} e_{11} & e_{12} & e_{13} \\ e_{21} & e_{22} & e_{23} \\ e_{31} & e_{32} & e_{33} \end{bmatrix} \begin{bmatrix} x_3 \\ y_3 \\ 0 \end{bmatrix} \quad (9)$$

and

$$\begin{bmatrix} e_{11} & e_{12} & e_{13} \\ e_{21} & e_{22} & e_{23} \\ e_{31} & e_{32} & e_{33} \end{bmatrix} \begin{bmatrix} e_{11} & e_{21} & e_{31} \\ e_{12} & e_{22} & e_{32} \\ e_{13} & e_{23} & e_{33} \end{bmatrix} = \begin{bmatrix} 1 & 0 & 0 \\ 0 & 1 & 0 \\ 0 & 0 & 1 \end{bmatrix} \quad (10)$$

where the first two equations come from the location relationships of BS₂ & BS₃ and the last equation is the ortho-normal property of the rotation transformation matrix. The individual rotation parameters are thus given by

$$\begin{aligned} e_{11} &= ({}^G x_2 - d_x) / \ell_{12} \\ e_{21} &= ({}^G y_2 - d_y) / \ell_{12} \\ e_{31} &= ({}^G z_2 - d_z) / \ell_{12} \\ e_{12} &= ({}^G x_3 - d_x - e_{11} x_3) / y_3 \\ e_{22} &= ({}^G y_3 - d_y - e_{21} x_3) / y_3 \\ e_{32} &= ({}^G z_3 - d_z - e_{31} x_3) / y_3 \\ e_{13} &= (1 - e_{11}^2 - e_{12}^2)^{1/2} \\ e_{23} &= (1 - e_{21}^2 - e_{22}^2)^{1/2} \\ e_{33} &= (1 - e_{31}^2 - e_{32}^2)^{1/2} \end{aligned} \quad (11)$$

[0073] Close-form method for global BS locations. The obtained translation and rotation parameters define a closed-form calculation for the desired transformation from the relative coordinates to the global geographical coordinates.

[0074] Local BS coordinates. Determining the location of the target may also be accomplished through the use of a TOA technique. The coordinate locations

$\begin{bmatrix} x_1 \\ y_1 \\ z_1 \end{bmatrix}, \begin{bmatrix} x_2 \\ y_2 \\ z_2 \end{bmatrix}, \dots, \begin{bmatrix} x_N \\ y_N \\ z_N \end{bmatrix}$ of base stations are known, as determined from above.

[0075] Local TU coordinates. Let $\begin{bmatrix} x \\ y \\ z \end{bmatrix}$ be the coordinate location of the target with these coordinates to be determined.

[0076] TOA Range Measurements. In the TOA technique, the target has a transmitter & receivers to broadcast and receive signals from various base stations. The same TOA distance measurement method described above is applicable for determining the distance from a target to the base stations. The target broadcasts a UWB signal transmission, and waits for the replies from the base stations. For explanation purposes, consider the situation of the base stations: BS_1, BS_2, \dots, BS_N where r_1, r_2, \dots, r_N are the distances from the target to each of the base stations, respectively.

[0077] TOA Location Problem. The distance measurements are related to the coordinates of the target and the base stations as follows:

$$\begin{aligned} r_1^2 &= (x - x_1)^2 + (y - y_1)^2 + (z - z_1)^2 \\ r_2^2 &= (x - x_2)^2 + (y - y_2)^2 + (z - z_2)^2 \\ &\vdots \\ r_N^2 &= (x - x_N)^2 + (y - y_N)^2 + (z - z_N)^2 \end{aligned} \tag{12}$$

Expansion of the polynomial terms yields:

$$\begin{aligned} r_1^2 &= x^2 - 2xx_1 + x_1^2 + y^2 - 2yy_1 + y_1^2 + z^2 - 2zz_1 + z_1^2 \\ r_2^2 &= x^2 - 2xx_2 + x_2^2 + y^2 - 2yy_2 + y_2^2 + z^2 - 2zz_2 + z_2^2 \\ &\vdots \\ r_N^2 &= x^2 - 2xx_N + x_N^2 + y^2 - 2yy_N + y_N^2 + z^2 - 2zz_N + z_N^2 \end{aligned} \tag{13}$$

The goal is to compute the location x, y & z of the target from the above relationship.

[0078] Closed-form TOA method for TU location. Manipulating the expanded equations, it can be shown that the coordinates of the target is given by

$$\begin{bmatrix} x \\ y \\ z \end{bmatrix} = \frac{1}{2} \begin{bmatrix} (x_2 - x_1) & (y_2 - y_1) & (z_2 - z_1) \\ (x_3 - x_2) & (y_3 - y_2) & (z_3 - z_2) \\ \vdots & \vdots & \vdots \\ (x_1 - x_N) & (y_1 - y_N) & (z_1 - z_N) \end{bmatrix}^{\#} \begin{bmatrix} (x_2^2 - x_1^2) + (y_2^2 - y_1^2) + (z_2^2 - z_1^2) - (r_2^2 - r_1^2) \\ (x_3^2 - x_2^2) + (y_3^2 - y_2^2) + (z_3^2 - z_2^2) - (r_3^2 - r_2^2) \\ \vdots \\ (x_1^2 - x_N^2) + (y_1^2 - y_N^2) + (z_1^2 - z_N^2) - (r_1^2 - r_N^2) \end{bmatrix} \quad (14)$$

where $[]^{\#}$ denotes a generalized Penrose pseudo-inverse of the matrix. This is the closed-form calculation for the local target coordinates based on a TOA technique.

[0079] Necessary condition. For $N = 3$, the pseudo-inverse is the standard matrix inverse, i.e., $[]^{\#} = []^{-1}$, For $N > 3$, the pseudo-inverse is defined $[]^{\#} = ([]^T [])^{-1} []^T$, where $[]^T$ denotes the matrix transpose. From the necessary condition of algebra, a solution for x, y & z exists only for cases where $N \geq 3$ and all the BS's are located at distinct locations. Therefore, the minimum number of base stations required to determine the location x, y & z of the target is 3. In practice, at least 4 base stations are desirable.

[0080] Summary of TOA method. Fig. 3 illustrates a TOA technique for locating the base stations and the target. First, the base stations are initialized. Base station 1, BS₁, acts as the master station and sends a signal 100, 102 and 104 to each of the slave stations, BS₂, BS₃ and BS₄. After a delay, each slave station sends a signal 110, 112 and 114 to the master station. The delay for each slave station is known to the master station. Slave stations also receive signals broadcast by other slave stations and rebroadcast those signal after the delay, as shown with signals 138 and 140 broadcast by BS₂ and BS₃, respectively, and rebroadcast as signals 142 and 144 by BS₃ and BS₄, respectively. The length of time for the signal round trip provides the distances between the base stations and their location through the calculation discussed above. After initialization, the target 120 sends a signal 122 which is received by each of the base stations. After a delay known to the target, the each base station sends a signal 130, 132, 134 and

136 to the target. Upon arrival at the target, the target can calculate its position through the calculation discussed above.

[0081] TDOA Method. Alternatively, determining the location of the target may also be accomplished through the use of a TDOA technique. Use of the TDOA technique is preferred, particularly when increased security is desired because the target need only have the capability to receive signals. By not transmitting signals, the target cannot reveal its location. In the TDOA

method, the $\begin{bmatrix} x_1 \\ y_1 \\ z_1 \end{bmatrix}, \begin{bmatrix} x_2 \\ y_2 \\ z_2 \end{bmatrix}, \dots, \begin{bmatrix} x_N \\ y_N \\ z_N \end{bmatrix}$ coordinates of base stations locations are known and $\begin{bmatrix} x \\ y \\ z \end{bmatrix}$ is

the target with these coordinates to be determined.

[0082] TDOA Ranging Scheme. In the TDOA technique, the target need only receive signals and does not need to transmit signal, although it may do so. The designated master station BS₁ initiates and broadcasts a UWB signal transmission at time T_0 , unknown to other base stations and target. Upon receiving the broadcast signal, each base station, BS_{*i*}, $i = 1, 2, \dots, N$ waits for a predetermined time delay T_{Di} and replies with its own UWB transmission signal that identifies the particular base station. The target will clock the arrival of the signals from each base stations as $T_i, i = 1, 2, \dots, N$.

[0083] TDOA Location Problem. The TDOA problem is to compute x, y & z from

knowing the coordinates $\begin{bmatrix} x_1 \\ y_1 \\ z_1 \end{bmatrix}, \begin{bmatrix} x_2 \\ y_2 \\ z_2 \end{bmatrix}, \dots, \begin{bmatrix} x_N \\ y_N \\ z_N \end{bmatrix}$ of base stations locations and the time

measurements $T_i, i = 1, 2, \dots, N$.

[0084] TDOA Relative Distance Measurements. As before, let r_1, r_2, \dots, r_N are the distances from the target to BS_{*i*}, $i = 1, 2, \dots, N$, respectively, and $\ell_{12}, \ell_{13}, \dots, \ell_{1N}$ from BS₁ to BS₂, BS₃, ..., BS_{*N*}. It is readily shown that the time-differences between the arrival times, $T_i, i = 1, 2, \dots, N$, translate to:

$$\begin{aligned}
C(T_1 - T_0) &= r_1 \\
C(T_2 - T_0) &= \ell_{12} + CT_{D2} + r_2 \\
&\vdots \\
C(T_N - T_0) &= \ell_{1N} + CT_{DN} + r_N
\end{aligned} \tag{15}$$

where C is the speed of light at a given temperature. The unknown variables in the above equation are $T_0, r_1, r_2, \dots, r_N$.

[0085] Range difference. Define the differences in the ranges, $\Delta r_{i,1}$, between the BS _{i} , $i = 2, \dots, N$, and BS₁ as:

$$\Delta r_{i,1} = r_i - r_1, \quad i = 2, \dots, N \tag{16}$$

From the above relationship, it is seen that the distances between the target and the base stations may be represented as:

$$\Delta r_{i,1} = C(T_i - T_1 - T_{Di}) - l_{i1}, \quad i = 2, \dots, N \tag{17}$$

which may be computed based on predetermined parameters, T_{Di} & l_{i1} and measured time-difference of arrivals (TDOA) $T_i - T_1$. The computed measured quantity $\Delta r_{i,1}$ in (17) will be used in the TDOA method for calculating the location of the target.

[0086] Manipulation toward linear relationship (First key simplification). The geometric relationships are nonlinear in nature and are difficult to solve. A key contribution here is to reduce the nonlinear relationships into linear relationships by eliminating nonlinear terms. Note that squaring this formula results in:

$$\Delta r_{i,1}^2 = r_i^2 + r_1^2 - 2r_i r_1 \tag{18}$$

with a cross product term of $r_i r_1$. Also note that multiplying $\Delta r_{i,1}$ and r_i also produces the cross term $r_i r_1$, as shown in:

$$\Delta r_{i,1} r_i = r_i r_1 - r_1^2 \tag{19}$$

Next note that following combination of $\Delta r_{i,1}^2$ & $\Delta r_{i,1}r_1$ eliminates the cross term r_1r_i :

$$\begin{aligned}
 \Delta r_{i,1}^2 + 2\Delta r_{i,1}r_1 &= r_i^2 - r_1^2 \\
 &= (x - x_i)^2 + (y - y_i)^2 + (z - z_i)^2 - (x - x_1)^2 + (y - y_1)^2 + (z - z_1)^2 \\
 &= x^2 - 2xx_i + x_i^2 + y^2 - 2yy_i + y_i^2 + z^2 - 2zz_i + z_i^2 \\
 &\quad - (x^2 - 2xx_1 + x_1^2 + y^2 - 2yy_1 + y_1^2 + z^2 - 2zz_1 + z_1^2) \\
 &= x_i^2 + y_i^2 + z_i^2 - (x_1^2 + y_1^2 + z_1^2) - 2(x_i - x_1)x - 2(y_i - y_1)y - 2(z_i - z_1)z
 \end{aligned} \tag{20}$$

A compact form for the above expression may be written as

$$\Delta r_{i,1}^2 + 2\Delta r_{i,1}r_1 = h_i^2 - h_1^2 - 2\Delta x_{i,1}x - 2\Delta y_{i,1}y - 2\Delta z_{i,1}z \tag{21}$$

where

$$\begin{aligned}
 h_i^2 &= x_i^2 + y_i^2 + z_i^2 \\
 \Delta x_{i,1} &= x_i - x_1 \\
 \Delta y_{i,1} &= y_i - y_1 \\
 \Delta z_{i,1} &= z_i - z_1
 \end{aligned}$$

[0087] Linear relationships. The above manipulation results in a set of algebraic equations which is linear in x , y & z and r_1 . Matrices may be used to solve these linear equations.

$$\begin{bmatrix} \Delta x_{2,1} & \Delta y_{2,1} & \Delta z_{2,1} \\ \Delta x_{3,1} & \Delta y_{3,1} & \Delta z_{3,1} \\ \vdots & \vdots & \vdots \\ \Delta x_{N,1} & \Delta y_{N,1} & \Delta z_{N,1} \end{bmatrix} \begin{bmatrix} x \\ y \\ z \end{bmatrix} = \frac{1}{2} \begin{bmatrix} h_2^2 - h_1^2 - \Delta r_{2,1}^2 \\ h_3^2 - h_1^2 - \Delta r_{3,1}^2 \\ \vdots \\ h_N^2 - h_1^2 - \Delta r_{N,1}^2 \end{bmatrix} + \begin{bmatrix} -\Delta r_{2,1} \\ -\Delta r_{3,1} \\ \vdots \\ -\Delta r_{N,1} \end{bmatrix} r_1 \tag{22}$$

[0088] Least squared error (LSE) estimate {want to avoid this phrase} **of** x , y & z The location x , y & z of the target is expressed in terms of r_1 as:

$$\begin{bmatrix} x \\ y \\ z \end{bmatrix} = \begin{bmatrix} \Delta x_{2,1} & \Delta y_{2,1} & \Delta z_{2,1} \\ \Delta x_{3,1} & \Delta y_{3,1} & \Delta z_{3,1} \\ \vdots & \vdots & \vdots \\ \Delta x_{N,1} & \Delta y_{N,1} & \Delta z_{N,1} \end{bmatrix}^{\#} \begin{bmatrix} -\Delta r_{2,1} \\ -\Delta r_{3,1} \\ \vdots \\ -\Delta r_{N,1} \end{bmatrix} r_1 + \frac{1}{2} \begin{bmatrix} \Delta x_{2,1} & \Delta y_{2,1} & \Delta z_{2,1} \\ \Delta x_{3,1} & \Delta y_{3,1} & \Delta z_{3,1} \\ \vdots & \vdots & \vdots \\ \Delta x_{N,1} & \Delta y_{N,1} & \Delta z_{N,1} \end{bmatrix}^{\#} \begin{bmatrix} h_2^2 - h_1^2 - \Delta r_{2,1}^2 \\ h_3^2 - h_1^2 - \Delta r_{3,1}^2 \\ \vdots \\ h_N^2 - h_1^2 - \Delta r_{N,1}^2 \end{bmatrix} \quad (23)$$

$$= \begin{bmatrix} a_x r_1 + b_x \\ a_y r_1 + b_y \\ a_z r_1 + b_z \end{bmatrix}$$

where:

$$\begin{bmatrix} a_x \\ a_y \\ a_z \end{bmatrix} = \begin{bmatrix} \Delta x_{2,1} & \Delta y_{2,1} & \Delta z_{2,1} \\ \Delta x_{3,1} & \Delta y_{3,1} & \Delta z_{3,1} \\ \vdots & \vdots & \vdots \\ \Delta x_{N,1} & \Delta y_{N,1} & \Delta z_{N,1} \end{bmatrix}^{\#} \begin{bmatrix} -\Delta r_{2,1} \\ -\Delta r_{3,1} \\ \vdots \\ -\Delta r_{N,1} \end{bmatrix}$$

$$\begin{bmatrix} b_x \\ b_y \\ b_z \end{bmatrix} = \frac{1}{2} \begin{bmatrix} \Delta x_{2,1} & \Delta y_{2,1} & \Delta z_{2,1} \\ \Delta x_{3,1} & \Delta y_{3,1} & \Delta z_{3,1} \\ \vdots & \vdots & \vdots \\ \Delta x_{N,1} & \Delta y_{N,1} & \Delta z_{N,1} \end{bmatrix}^{\#} \begin{bmatrix} h_2^2 - h_1^2 - \Delta r_{2,1}^2 \\ h_3^2 - h_1^2 - \Delta r_{3,1}^2 \\ \vdots \\ h_N^2 - h_1^2 - \Delta r_{N,1}^2 \end{bmatrix}$$

[0089] Necessary condition. The necessary condition for pseudo-inverse formulation in (23) to yield a unique solution is to have $N \geq 4$. This means that the TDOA method would require a minimum of four base stations to determine the location x, y & z of the target. In practice, more than 4 base stations are desirable.

[0090] Manipulation to quadratic form (Second key simplification). Expand the Euclidean distance relationship to yield another expression relating x, y & z and r_1 .

$$\begin{aligned} r_1^2 &= (x - x_1)^2 + (y - y_1)^2 + (z - z_1)^2 \\ &= x^2 + y^2 + z^2 + x_1^2 + y_1^2 + z_1^2 - 2xx_1 - 2yy_1 - 2zz_1 \end{aligned} \quad (24)$$

Substituting the LSE relationship into the Euclidean relationship yields:

$$\begin{aligned} r_1^2 &= (a_x r_1 + b_x)^2 + (a_y r_1 + b_y)^2 + (a_z r_1 + b_z)^2 \\ &\quad - 2(a_x r_1 + b_x)x_1 - 2(a_y r_1 + b_y)y_1 - 2(a_z r_1 + b_z)z_1 + x_1^2 + y_1^2 + z_1^2 \end{aligned} \quad (25)$$

This essentially is a quadratic polynomial equation of the form:

$$(a_x^2 + a_y^2 + a_z^2 - 1)r_1^2 - 2(a_x(x_1 - b_x) + a_y(y_1 - b_y) + a_z(z_1 - b_z))r_1 + (x_1 - b_x)^2 + (y_1 - b_y)^2 + (z_1 - b_z)^2 = 0 \quad (26)$$

[0091] Calculation of r_1 . The polynomial equation may be expressed more compactly as

$$ar_1^2 + br_1 + c = 0 \quad (27)$$

where

$$a = a_x^2 + a_y^2 + a_z^2 - 1$$

$$b = -2(a_x(x_1 - b_x) + a_y(y_1 - b_y) + a_z(z_1 - b_z))$$

$$c = (x_1 - b_x)^2 + (y_1 - b_y)^2 + (z_1 - b_z)^2$$

The quadratic polynomial yields two answers for r_1 .

$$r_1 = \frac{-b \pm \sqrt{b^2 - 4ac}}{2a} \quad (28)$$

[0092] Calculation of x , y & z . Selecting the positive answer for r_1 and compute the location of target as:

$$\begin{bmatrix} x \\ y \\ z \end{bmatrix} = \begin{bmatrix} a_x \\ a_y \\ a_z \end{bmatrix} r_1 + \begin{bmatrix} b_x \\ b_y \\ b_z \end{bmatrix} \quad (29)$$

[0093] Closed-form TDOA method for TU location. Formulas (17), (21), (23), (27), (28) & (29) define the explicit closed-form TDOA method for calculating the location of the target. The direct measure-and-calculate TDOA formulas enhance speed in processing. They represent a key embodiment of the invention.

[0094] Existing Approaches to TDOA Location Problem. It is noted that existing approaches to the TDOA problem have been limited to numerical approximation techniques such as the Taylor series nonlinear least squares iterative method. The method starts by guessing the location of the target, linearizing the nonlinear hyperbolic functions for the TDOA relationship, and using the least squares estimation technique to compute a new estimate of the target position.

The process is repeated until the solution converges to a location. The approach is therefore indirect and lengthy, and may not converge to a true solution.

[0095] Summary of TDOA method. Fig. 4 illustrates a TDOA technique for locating the target. The positions of the base stations are known from the information gathered using the TOA method. The master station BS₁ broadcasts a signal 202 to the target 203; the same broadcast signal 204, 206 and 208 are also received by the slave stations BS₂, BS₃ and BS₄. The slave stations wait a set delay, T_{D2}, T_{D3}, T_{D4}, and re-send the signals 214, 216 and 218 to the target. Based on the difference in arrival times of each of the signals 202, 214, 216 and 218, the target can determine its own position according to the calculation discussed above. A schematic depiction of the arrival times of is shown at the bottom of Fig. 4.

[0096] Ranging & Positioning Errors. Accuracy in the measurement of ranges depends on several factors including hardware clock & delays, transmission model, etc. Each measured range can be expressed as the sum of its true range and its measurement error, i.e.,

$r_i + \Delta r_i, i = 1, \dots, N$. The position of the target can also be similarly expressed as

$x + \Delta x, y + \Delta y$ & $z + \Delta z$, where $\Delta x, \Delta y$ & Δz are the calculation errors. It follows from the least squares estimate formula (14) that the calculation errors are related to the measurements errors as

$$\begin{bmatrix} \Delta x \\ \Delta y \\ \Delta z \end{bmatrix} = \underbrace{\begin{bmatrix} (x_2 - x_1) & (y_2 - y_1) & (z_2 - z_1) \\ (x_3 - x_2) & (y_3 - y_2) & (z_3 - z_2) \\ \vdots & \vdots & \vdots \\ (x_1 - x_N) & (y_1 - y_N) & (z_1 - z_N) \end{bmatrix}}_{\mathbf{C}} \begin{bmatrix} r_1 & -r_2 & \dots & 0 \\ 0 & r_2 & -r_3 & \vdots \\ \vdots & \vdots & \ddots & \\ -r_1 & 0 & \dots & r_N \end{bmatrix} \begin{bmatrix} \Delta r_1 \\ \Delta r_2 \\ \vdots \\ \Delta r_N \end{bmatrix} = \mathbf{C} \begin{bmatrix} \Delta r_1 \\ \Delta r_2 \\ \vdots \\ \Delta r_N \end{bmatrix} \quad (30)$$

[0097] Positioning accuracy. Assuming the average measurement errors are zero, the covariance of the measurement errors can be expressed as

$$\mathbf{Q}_r = \text{average of} \left\{ \begin{bmatrix} \Delta r_1 \\ \Delta r_2 \\ \vdots \\ \Delta r_N \end{bmatrix} \begin{bmatrix} \Delta r_1 & \Delta r_2 & \dots & \Delta r_N \end{bmatrix} \right\} \quad (31)$$

The covariance of the errors in calculation of the position x, y & z , is similarly defined as

$$Q_x = \text{average of } \left\{ \begin{bmatrix} \Delta x \\ \Delta y \\ \Delta z \end{bmatrix} [\Delta x \ \Delta y \ \Delta z] \right\} \quad (32)$$

Then it follows from (30) that the covariance of the position errors is related to the measurement errors by

$$Q_x = C Q_r C^T \quad (33)$$

Formula (33) defines the resolution or accuracy in the calculation of the position in terms of covariance Q_x . The standard deviations of the resolution is given by $|\sqrt{Q_x}|$, which is the square root of the covariance. The variance depends on the matrix C , which relies on the locations of base stations (x_i 's, y_i 's & z_i 's) and their ranges (r_i 's) to the target. That is, positioning accuracy depends on the configuration of BS's location and the current position of the target. As discussed above, by placing one base station or the target out of the plane of the remaining base stations, the accuracy can be increased.

[0098] Illustration of Ranging & Positioning Accuracy. In practice, UWB RAC equipment will be tested and calibrated via experiments and correlating it with known measurements. Therefore well calibrated equipment can be as accurate in calibration as its ranging resolution. Referring to a prior example, a 350Mbits/s chiprate UWB signal could be over-sampled at a rate of 1.75 Gbits/s (five times the chiprate), so that the PN correlation yield a ranging resolution of about 0.1713 meter. For example, the resolution can be treated as the standard deviation; and its covariance would be 0.02934 m². Since each UWB RAC receivers are independent, the ranging covariance Q_r becomes a diagonal matrix with 0.02934 as elements. The positioning accuracy is then reflected in the positioning covariance $Q_x = C Q_r C^T$, where C depends x_i 's, y_i 's & z_i 's and r_i 's. For example, let the $\{x_i, y_i, z_i\}$ of the BS_{*i*}, $i = 1, \dots, 5$, be located at ad hoc network coordinates of $\{0, 0, 0\}$, $\{1000, 0, 0\}$, $\{1000, 1000, 0\}$, $\{0, 1000, 1000\}$ & $\{1000, 1000, 1000\}$, with the coordinates represents meters from the origin. Let the target be located at $\{400, 500, 600\}$, such that $\{r_i\}$ is $\{877.50\}$, $\{984.89\}$, $\{984.89\}$, $\{754.98\}$ & $\{877.50\}$. Then the position error covariance results in

$$\mathbf{Q}_x = \mathbf{C} \mathbf{Q}_r \mathbf{C}^T = \begin{bmatrix} 0.0226 & -0.0142 & 0.0142 \\ -0.0142 & 0.0569 & -0.0427 \\ 0.0142 & -0.0427 & 0.0511 \end{bmatrix}$$

The standard deviations in the position errors $\{\Delta x, \Delta y, \Delta z\}$ can be deduced from the square roots of the diagonal elements of \mathbf{Q}_x as $\{0.150, 0.239, 0.226\}$ meters, which typify the possible accuracy in the position calculation. Note that accuracy is improved if higher over-sampling rate is employed. For example, the position error standard deviations would reduce to $\{0.015, 0.024, 0.023\}$ meters, when an over-sampling rate of 17.5 Gbits/s is used.

[0099] Update Rate. The update rate for the UWB RAC TOA/TDOA methods depends on the distances between the stations and target, and the performance of computing equipment. The

update rate (updates/second) can be estimated from $F_{\text{Update}} = \left(1 + \sum_{i=1}^N (i-1)\right) N T_{\text{FlightMax}} + T_{\text{Processing}}$

where $T_{\text{FlightMax}}$ is the maximum flight time between stations/targets, and $T_{\text{Processing}}$ is the electronics and computation time. For an operation area spreading over 1 km using current technology, an estimate of the update rate is at least about 200 location update per second is possible. Of course, slower update rates may also be used to suitably meet the practical requirements of any base station or target. For example update rates of about 25 times/sec, about 50 times/sec, about 100, times/sec, about 150 times/sec and rates between these rates may be suitable.

[00100] It will be further appreciated that functions or structures of a plurality of components or steps may be combined into a single component or step, or the functions or structures of one-step or component may be split among plural steps or components. The present invention contemplates all of these combinations. Unless stated otherwise, dimensions and geometries of the various structures depicted herein are not intended to be restrictive of the invention, and other dimensions or geometries are possible. Plural structural components or steps may be provided by a single integrated structure or step. Alternatively, a single integrated structure or step might be divided into separate plural components or steps. In addition, while a feature of the present invention may have been described in the context of only one of the illustrated embodiments,

such feature may be combined with one or more other features of other embodiments, for any given application. It will also be appreciated from the above that the fabrication of the unique structures herein and the operation thereof also constitute methods in accordance with the present invention.

[00101] The explanations and illustrations presented herein are intended to acquaint others skilled in the art with the invention, its principles, and its practical application. Those skilled in the art may adapt and apply the invention in its numerous forms, as may be best suited to the requirements of a particular use. Accordingly, the specific embodiments of the present invention as set forth are not intended as being exhaustive or limiting of the invention. The scope of the invention should, therefore, be determined not with reference to the above description, but should instead be determined with reference to the appended claims, along with the full scope of equivalents to which such claims are entitled. The disclosures of all articles and references, including patent applications and publications, are incorporated by reference for all purposes.

What is claimed is:

1. A method of determining the location of a target, comprising:
initializing a plurality of base stations to determine their relative location to each other;
measuring, at the target, the time of arrival of at least one signal from each of the plurality of base stations;
calculating directly the location of the target relative to the plurality of base stations using a closed solution, where the plurality of base stations is at three when a time of arrival technique is used and wherein the plurality of base stations is at least four when a time difference of arrival technique is used.
2. The method of claim 1, wherein the target calculates its own position.
3. The method of claim 1, wherein each of the base stations is a mobile base station.
4. The method of claim 1, wherein the initializing step comprises using a time of arrival technique to determine the location of each base station.
5. The method of claim 1, further comprising initializing the base stations to determine their global geographic location.
6. The method of claim 1, wherein the measuring and calculating steps are repeated at least 50 times a sec.
7. The method of claim 1, wherein the measuring and calculating steps are repeated at least 200 times a sec.
8. The method of claim 1, wherein the calculating step comprises using a time of arrival technique to calculate the location of the target.
9. The method of claim 1, wherein the calculating step comprises using a time difference of arrival technique to calculate the location of the target.
10. The method of claim 1, wherein the measuring step comprises transmitting a unique PN code from each base station.
11. The method of claim 1, wherein the measuring step comprises using a UWB signal with a chip rate between about 0.1 and about 10 Gbits/sec.

12. The method of claim 1, wherein the measuring step comprises using a DS-CDMA communication scheme.
13. The method of claim 1, wherein the measuring step comprises oversampling the received signal between about 0.3 and about 30 giga-samples/sec.
14. The method of claim 1, wherein the measuring step comprises oversampling with a digital sampler or an analog-to-digital converter.
15. The method of claim 1 wherein the calculating step yields a location of the target with a resolution between about 0.01 and about 1.0 meter.
16. The method of claim 1 wherein the calculating step yields a location of the target with an accuracy between about 0.01 and about 1.0 meter.
17. A system for determining the location of a receiver, comprising:
 - at least three base stations and at least one target for a TOA technique and at least four base stations and a target for a TDOA technique,
 - each base station comprising at least one GHF UWB transmitter,
 - wherein at least one base station and the target are mobile and wherein the target is capable of calculating its location using a closed form solution based.
18. The system of claim 17, wherein the target is an unmanned ground vehicle comprising a mine sweeper.
19. The system of claim 17, wherein the target is an unmanned aerial vehicle comprising an aerial drone.
20. The system of claim 17, wherein the target is an unmanned sea vehicle.

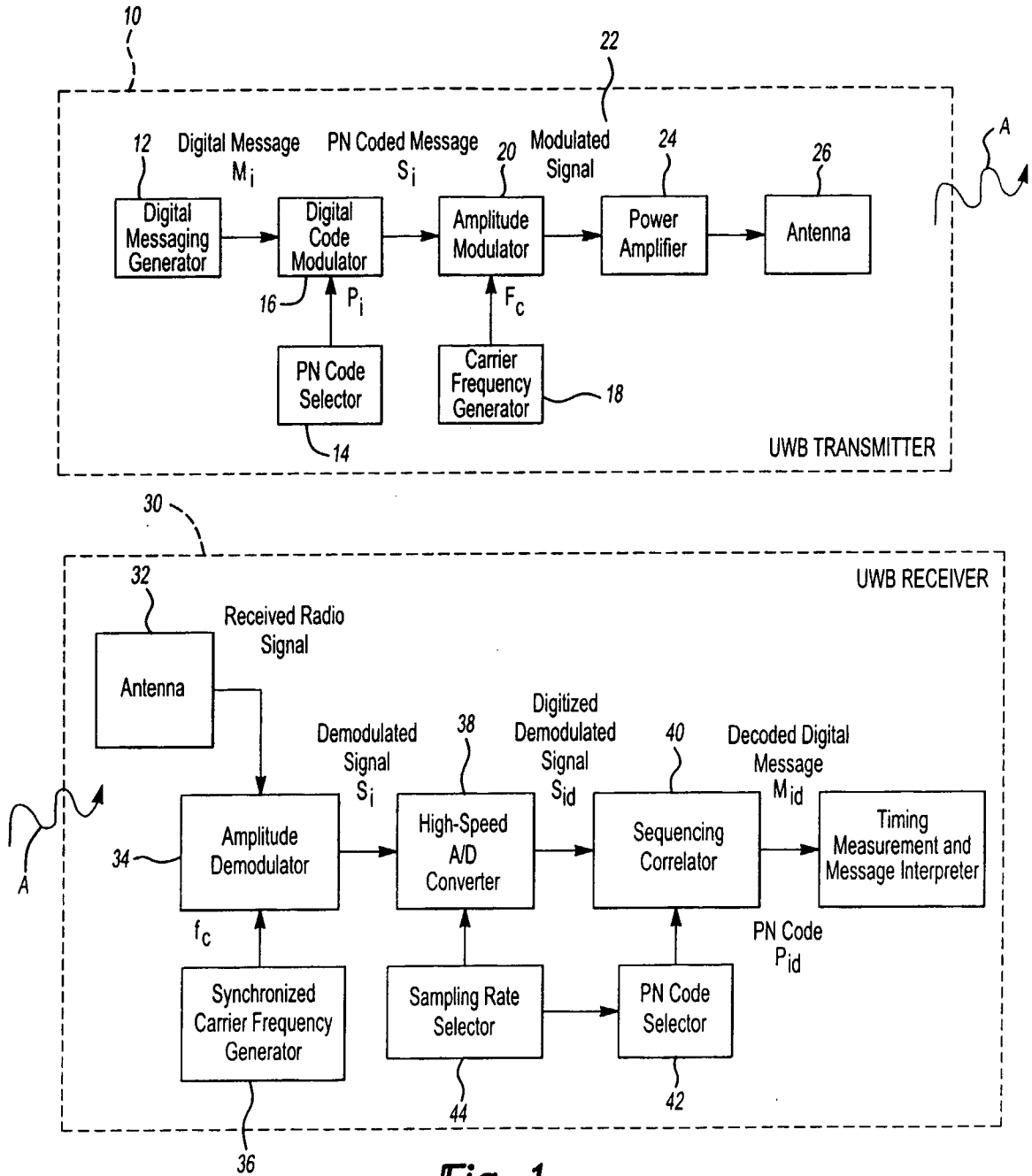


Fig-1

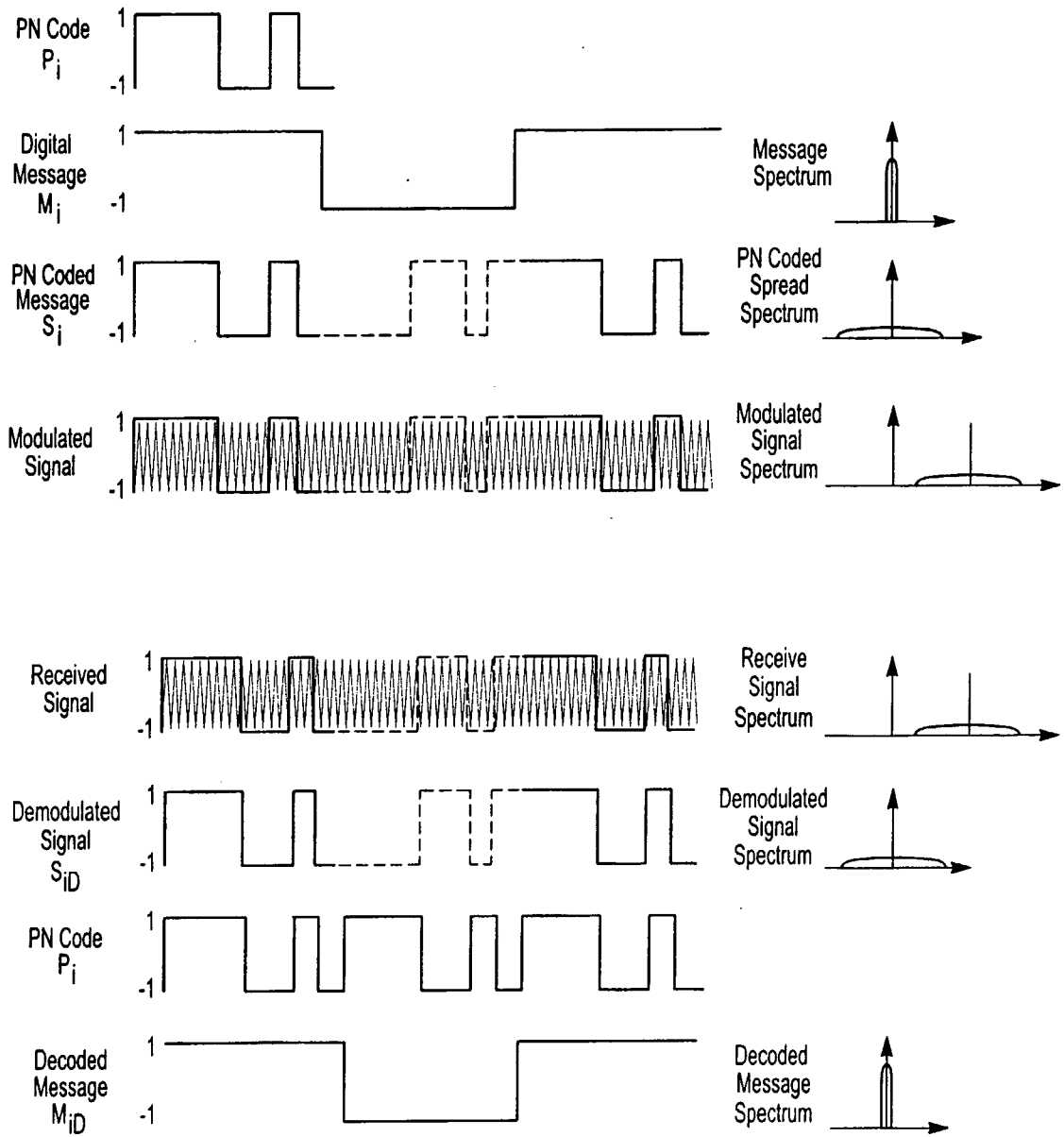
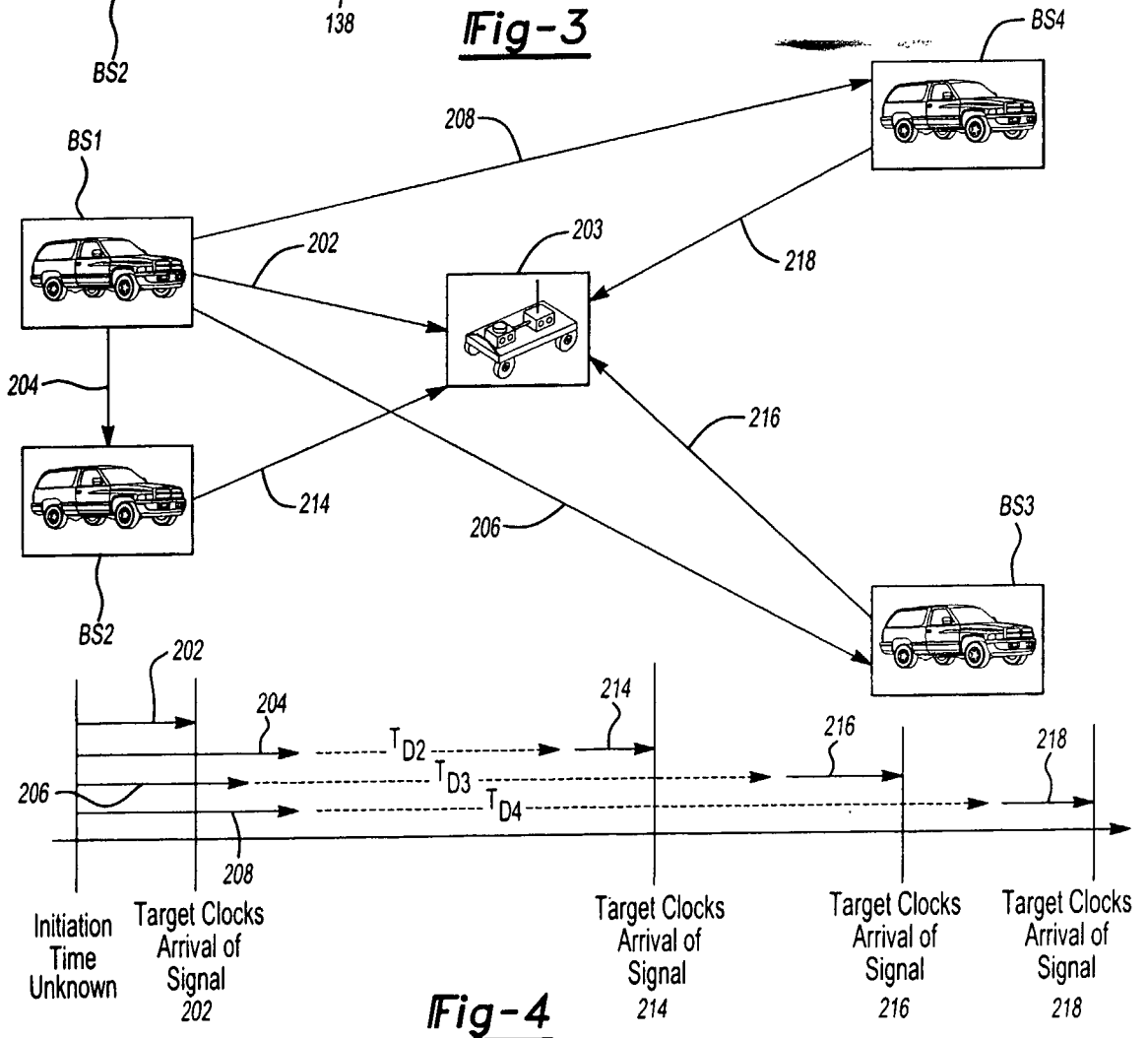
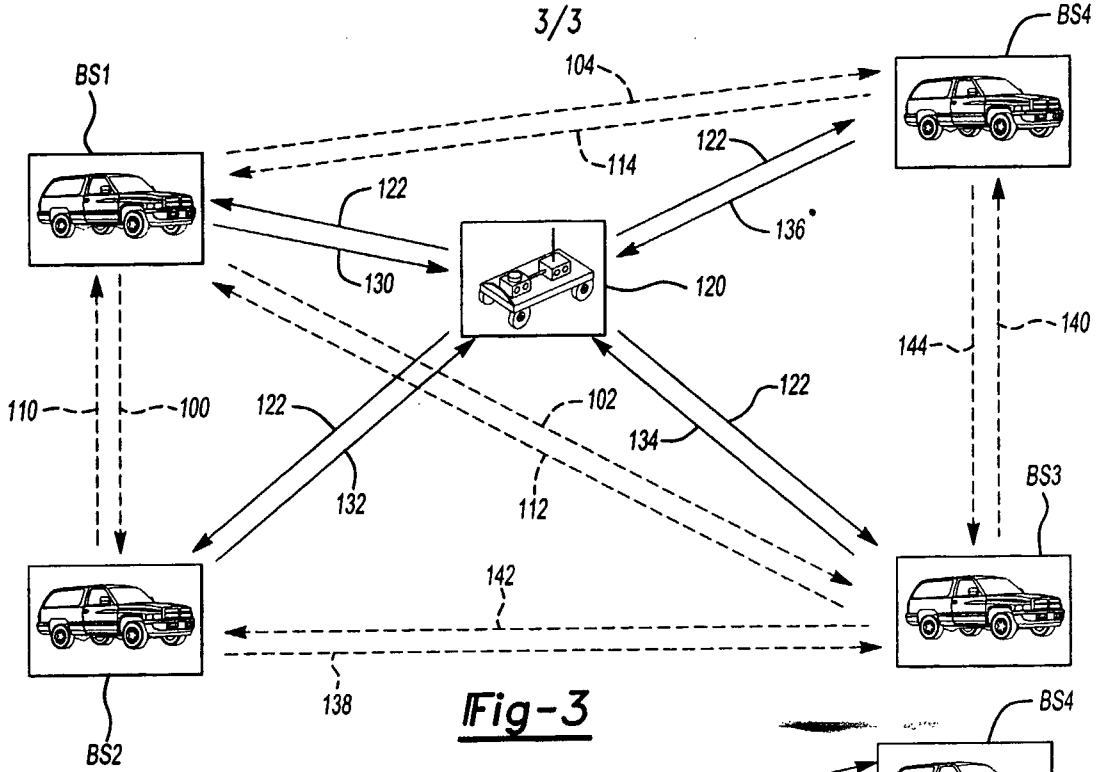


Fig-2



INTERNATIONAL SEARCH REPORT

/US2005/004936

A. CLASSIFICATION OF SUBJECT MATTER

IPC 7 G01S5/02 G01S5/06 G01S5/08

According to International Patent Classification (IPC) or to both national classification and IPC

B. FIELDS SEARCHED

Minimum documentation searched (classification system followed by classification symbols)

IPC 7 G01S

Documentation searched other than minimum documentation to the extent that such documents are included in the fields searched

Electronic data base consulted during the international search (name of data base and, where practical, search terms used)

EPO-Internal, WPI Data

C. DOCUMENTS CONSIDERED TO BE RELEVANT

Category °	Citation of document, with indication, where appropriate, of the relevant passages	Relevant to claim No.
Y	US 2002/122003 A1 (PATWARI NEAL K ET AL) 5 September 2002 (2002-09-05) paragraph '0024! - paragraph '0032! paragraph '0042! - paragraph '0045! paragraph '0057! - paragraph '0147!; figures 1,2,5	1-20
Y	US 2001/034223 A1 (RIESER CHRISTIAN J ET AL) 25 October 2001 (2001-10-25) page 2 - page 5 paragraph '0192! - paragraph '0193!; figure 1	1-20
Y	EP 1 292 043 A (THALES RESEARCH & TECHNOLOGY LIMITED) 12 March 2003 (2003-03-12) abstract; figures 3,6	1-20
	----- -/--	



Further documents are listed in the continuation of box C.



Patent family members are listed in annex.

° Special categories of cited documents :

- *A* document defining the general state of the art which is not considered to be of particular relevance
- *E* earlier document but published on or after the international filing date
- *L* document which may throw doubts on priority claim(s) or which is cited to establish the publication date of another citation or other special reason (as specified)
- *O* document referring to an oral disclosure, use, exhibition or other means
- *P* document published prior to the international filing date but later than the priority date claimed

- *T* later document published after the international filing date or priority date and not in conflict with the application but cited to understand the principle or theory underlying the invention
- *X* document of particular relevance; the claimed invention cannot be considered novel or cannot be considered to involve an inventive step when the document is taken alone
- *Y* document of particular relevance; the claimed invention cannot be considered to involve an inventive step when the document is combined with one or more other such documents, such combination being obvious to a person skilled in the art.
- * & * document member of the same patent family

Date of the actual completion of the international search

14 April 2005

Date of mailing of the international search report

25/04/2005

Name and mailing address of the ISA

European Patent Office, P.B. 5818 Patentlaan 2
NL - 2280 HV Rijswijk
Tel. (+31-70) 340-2040, Tx. 31 651 epo nl,
Fax: (+31-70) 340-3016

Authorized officer

Saur, E

INTERNATIONAL SEARCH REPORT

US2005/004936

C.(Continuation) DOCUMENTS CONSIDERED TO BE RELEVANT		
Category °	Citation of document, with indication, where appropriate, of the relevant passages	Relevant to claim No.
Y	EP 0 936 829 A (FUJITSU LIMITED) 18 August 1999 (1999-08-18) figures 3,4,14B -----	1-20
Y	US 6 249 252 B1 (DUPRAY DENNIS J) 19 June 2001 (2001-06-19) column 18, line 13 - column 25, line 34; figure 4 -----	1-20
P,Y	US 6 700 533 B1 (WERB JAY ET AL) 2 March 2004 (2004-03-02) column 7, line 22 - line 35; figure 5 -----	1-20

INTERNATIONAL SEARCH REPORT

Information on patent family members

US2005/004936

Patent document cited in search report	Publication date	Publication date	Patent family member(s)	Publication date
US 2002122003	A1	05-09-2002	CN 1488076 A	07-04-2004
			EP 1352259 A2	15-10-2003
			JP 2005507070 T	10-03-2005
			WO 02054100 A2	11-07-2002
US 2001034223	A1	25-10-2001	AU 1125300 A	08-05-2000
			WO 0023956 A1	27-04-2000
EP 1292043	A	12-03-2003	EP 1292043 A1	12-03-2003
			GB 2383709 A , B	02-07-2003
			US 2003058924 A1	27-03-2003
EP 0936829	A	18-08-1999	JP 11234736 A	27-08-1999
			EP 0936829 A2	18-08-1999
			US 6243575 B1	05-06-2001
US 6249252	B1	19-06-2001	US 6236365 B1	22-05-2001
			US 2003146871 A1	07-08-2003
			US 2003222820 A1	04-12-2003
			US 2001022558 A1	20-09-2001
			US 2003222819 A1	04-12-2003
US 6700533	B1	02-03-2004	AU 4987800 A	21-11-2000
			CA 2391285 A1	04-05-2000
			EP 1206757 A1	22-05-2002
			WO 0068907 A1	16-11-2000